



ZoomLab® – The Digital Solution for Drug Product Development

Maximize your ZoomLab® experience with our Premium Offerings

From new components using machine learning models, customization and enhanced data protection, to tailored training from our ZoomLab® experts, or lab data for operating the ZoomLab® applications, we now provide specialized packages designed to boost your productivity. Benefit from our experience of more than five years of digital drug formulation development with ZoomLab® and validated algorithms.

Premium Accounts

Exclusive offer for BASF customers



30 days
free trial

Single-User Premium

Provides individual formulators access to all **basic content** in ZoomLab® **plus premium content: apps, learning center as well as scientific & technical support.**

- Premium apps offer improved efficiency and productivity through internally developed machine learning models and data generation
- Premium accounts are frequently updated with new features and improvements
- Users receive scientific support and exclusive learning center content



Corporate Premium

Groups multiple formulators of a company under one corporate account: **advanced data security & project administration** features tailored to the needs of pharmaceutical companies. Corporate Premium provides **access to all basic & premium content in ZoomLab®**

Enjoy all the features of Single-User Premium **plus**

- Enhanced data security through a multi-tenant architecture: company data remains confidential, with no tracking of usage
- Corporate Single-Sign-On if required
- Ability to share and collaborate on projects within the same organization
- Tailored onboarding seminar

Premium Services



Laboratory Services

Accelerate your formulation development by utilizing our Laboratory Services, which offer specialized experiment bundles tailored to each app.



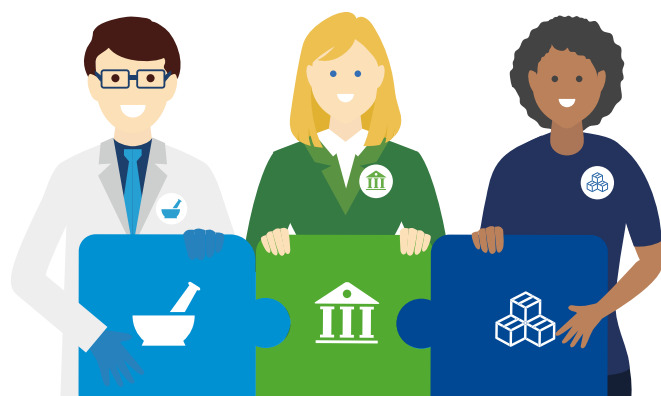
Customized Workshops

Book your ZoomLab® workshop with our experts for an immersive experience of in-silico drug development!

Components	Features	Free	Single-User Premium	Corporate Premium
Formulation Apps	Access to core formulation apps, i.e. formulation wizard	●	●	●
	Access to exclusive premium apps	Test period	●	●
	Data import & export (2026)		●	●
Projects	Number of projects	5	Unlimited	Unlimited
	Share projects within organization			●
Ingredients	Access to public ingredients (BASF & partners)	●	●	●
	Create and share private ingredient database within organization			●
Learning	Access to core content: Tutorials, Scientific Documentation	●	●	●
	Access to exclusive premium content: Case studies, App academy videos		●	●
	Individual onboarding webinar			●
Support	Contact technical support	●	●	●
	Contact scientific support		●	●
Infrastructure	Data segregation and single sign-on			●

Ready to take the next step
with **ZoomLab® Premium?**

More information and sign-up:
zoomlab.com



BASF
We create chemistry

This document, or any information provided herein does not constitute a legally binding obligation of BASF and has been prepared in good faith and is believed to be accurate as of the date of issuance. Unless expressly agreed otherwise in writing in a supply contract or other written agreement between you and BASF:

- (a) To the fullest extent not prohibited by the applicable laws, BASF EXPRESSLY DISCLAIMS ALL OTHER REPRESENTATIONS, WARRANTIES, CONDITIONS OR GUARANTEES OF ANY KIND, WHETHER EXPRESS OR IMPLIED, WRITTEN OR ORAL, BY FACT OR LAW, INCLUDING ANY IMPLIED WARRANTIES, REPRESENTATIONS OR CONDITIONS OF MERCHANTABILITY, FITNESS FOR A PARTICULAR PURPOSE, SATISFACTORY QUALITY, NON-INFRINGEMENT, AND ANY REPRESENTATIONS, WARRANTIES, CONDITIONS OR GUARANTEES, ARISING FROM STATUTE, COURSE OF DEALING OR USAGE OF TRADE and BASF HEREBY EXPRESSLY EXCLUDES AND DISCLAIMS ANY LIABILITY RESULTING FROM OR IN CONNECTION WITH THIS DOCUMENT OR ANY INFORMATION PROVIDED HEREIN, including, without limitation, any liability for any direct, consequential, special, or punitive damages relating to or arising therefrom, except in cases of (i) death or personal injury to the extent caused by BASF's sole negligence, (ii) BASF's willful misconduct, fraud or fraudulent misrepresentation or (iii) any matter in respect of which it would be unlawful for BASF to exclude or restrict liability under the applicable laws;
- (b) Any information provided herein can be changed at BASF's sole discretion anytime and neither this document nor the information provided herein may be relied upon to satisfy from any and all obligations you may have to undertake your own inspections and evaluations;
- (c) BASF rejects any obligation to, and will not, automatically update this document and any information provided herein, unless required by applicable law; and
- (d) The user is responsible for confirming that the user has retrieved the most current version of this document from BASF as appropriate